

Installation instructions : 600MM 36W ECO LED PANEL LIGHT SY7629

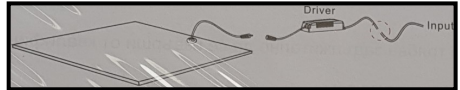
Thank you for purchasing this SycamoreLED.com product. Please make sure instructions are followed carefully prior to and during installation and product is not altered, otherwise warranty may not be valid. For technical support or warranty information please visit www.sycamoreLED.com, or call our dedicated technical helpline +44 (0) 113 2866686.

IMPORTANT—Please read prior to installation

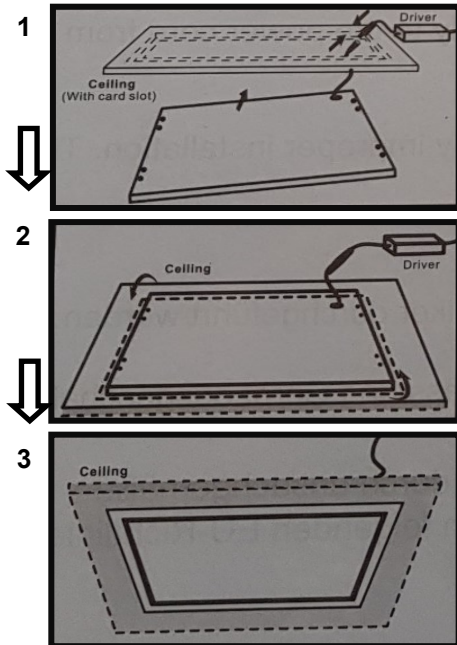
- 1) Please read these instructions carefully before commencing any work
- 2) Please retain this leaflet for future reference
- 3) This product must be installed by a qualified electrician in accordance with the current IEE wiring regulations
- 4) The PSU must be rated 12VDC and be compatible with the pre-wired connector system of this product
- 5) Never exceed the wattage stated
- 6) To prevent electrocution switch the power off at the mains supply before installing or maintaining this fitting
- 7) Ensure others cannot restore the electrical supply without your knowledge

INSTALLATION NOTES

- 1) Connect the driver with the input wire
- 2) Connect the driver with the lamp
- 3) Install the lamp then turn on the power supply



INSTALLATION W/ DIAGRAMS



1) First connect the wire of the panel light to the driver, ensure that the connection is strong. Place the panel light oblique upward, insert to the card slot on the ceiling.

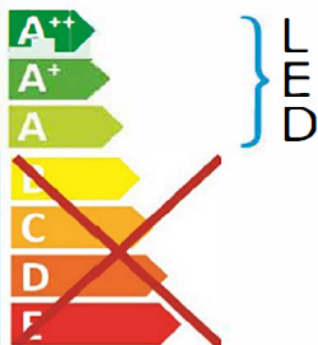
2) Rotate the panel light and ensure that it is placed smoothly on the card slot on the ceiling.

3) Visual from below - ensure that the panel light on the ceiling has no gaps, if adjustment is needed ensure the main power is turned off.

sycamore SY7629



This luminaire contains built-in LED lamps.



The lamps cannot be changed in the luminaire.

874/2012

