

# SYCAMORE

## Installation instructions : SY9067WH 4/6/8W LED Dimmable Fire Rated IP65 Downlight

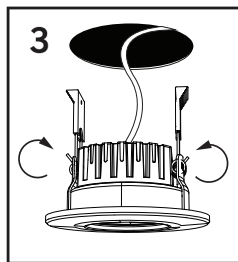
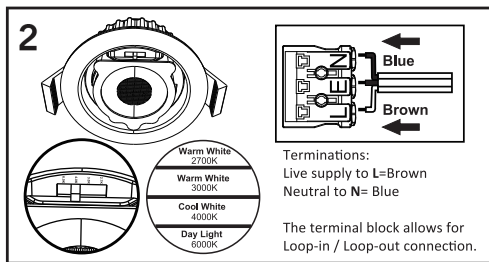
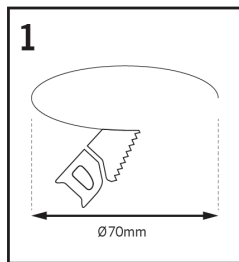
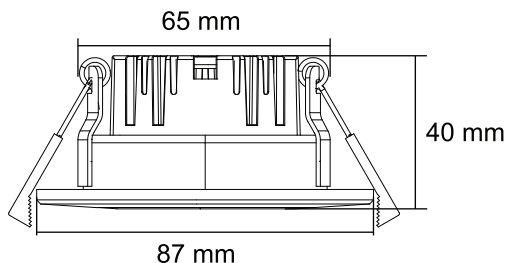
Thank you for purchasing this SycamoreLED.com product. Please make sure instructions are followed carefully prior to and during installation and product is not altered, otherwise warranty may not be valid. For technical support or warranty information please visit [www.sycamoreLED.com](http://www.sycamoreLED.com), or call our dedicated technical helpline +44 (0) 113 286686.

### IMPORTANT—Please read prior to installation

- 1) Please read these instructions carefully before commencing any work
- 2) Please retain these instructions for future reference
- 3) **This unit must be installed by a qualified electrician in accordance with the IEE wiring regulations and building regulations**
- 4) To prevent electrocution switch the power off at the mains supply before installing or maintaining this fitting
- 5) Ensure others cannot restore the electrical supply without your knowledge

### SPECIFICATION & DIAGRAMS

THE TECHNICAL SPEC...	
Fitting Type	Dimmable LED, IP65, Fire rated for 30, 60 & 90 minute plasterboard ceilings
Finish	White,Chrome, Brushed Nickel,Gold,Copper and Matt Black Bezel Available
Cut Out	70mm
IP Rating	IP65
Lamp Life	50,000 hours
Colour Temperature	Switchable
Wattage	4W/6W/8W



### INSTALLATION INSTRUCTIONS

- 1) These products are designed for connection to a 220-240V mains supply.
- 2) Any broken or damaged parts should be replaced as soon as possible
- 3) Always switch off mains supply before installation or servicing.
- 4) This Luminaire is suitable for indoor use only and should not be fitted to damp or wet surfaces such as freshly plastered or painted wall
- 5) This fitting is designed to allow loft insulation to be continuously run over the back of the fitting (IC Rated)
- 6) It is recommended that a sample hole is cut in some scrap material to familiarise yourself with the installation.
- 7) Once you are completely satisfied, locate the area suitable to install these Luminaires. Cut a 70mm round hole in the ceiling and ensure sufficient ceiling void without infringing on joists, water pipes or electrical cables.
- 8) Allow the lighting cable to drop through the aperture. Connect mains cabling to the connector block observing the L for Live and N for Neutral. An earth provision has been provided for termination only.
- 9) Locate the switch at the rear of the fitting, select your desired colour temperature. (2700K,3000K,4000K or 6000K)
- 10) Ensure all cables are neatly dressed away from any secondary heat sources.
- 11) Turn on the mains supply to test the Luminaire.

## BEZEL REPLACEMENT

The SY9067 comes in a White finish as standard, you can purchase a replacement bezel in either Polished Chrome (SY9068CC), Brushed Nickel (SY9068BN), Gold (SY9068G), Copper (SY9068CO) or Matt Black (SY9068BK).

- To install the bezel align the 2 lugs on either side of the bezel with the downlight.
- Lower the bezel lugs into the downlight's inner ring and twist clockwise until the bezel locks into place.
- To remove the bezel twist anti-clockwise and pull down.

## DIMMABLE LUMINAIRE

SY9067 is dimmable with many Triac Leading and Trailing edge dimmer switches and dimming systems.

Recommended Dimmers:

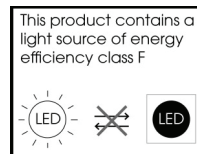
- Non-Electronic Leading Edge: Shneider/GET/Danlers/BG/Varilight/Deta/Zano/Emco
- Electronic Dimmers: Wireless Kinetic Receiver SY8989 & Switches SY8990—SY8992
- Do not exceed ¼ Of dimmer capacity. (e.g. for 400W dimmers, do not exceed 100W).

Do not carry out high voltage insulation testing with this luminaire connected as it will damage the driver.

## CARE IN USE

- 1) Please note this fitting has non replaceable parts
- 2) Always switch off or disconnect from the mains when cleaning the product.
- 1) We recommend cleaning with a soft dry cloth. Do not use scourers, abrasives or chemical cleaners.
- 1) Do not allow moisture to come into contact with electrical parts
- 2) This luminaire should not be disposed of with normal household rubbish.

When a replacement is purchased, this luminaire should be returned to the retailer to safely dispose of (WEEE Directive effective July 2006—Waste from Electrical & Electronic Equipment)



Address : Sycamore Lighting , Unit 5a Helios 47,  
3 Isabella Road, Garforth, Leeds, LS25 2DY  
Technical helpline : 0113 2866686

\*Please email [sales@sycamoreled.com](mailto:sales@sycamoreled.com) to register your product

