

Installation instructions : QI Enabled Motorised Pop-Up Socket w/ SPEAKER SY8994A/SPEAKER, SY9019BK/SPEAKER

Thank you for purchasing this SycamoreLED.com product. Please make sure instructions are followed carefully prior to and during installation and product is not altered, otherwise warranty may not be valid. For technical support or warranty information please visit www.sycamoreLED.com, or call

IMPORTANT—Please read prior to installation

Thank you for purchasing the motorised pop-up socket. We hope that our product will provide you with convenience for years to come.

UNPACKING

Remove contents from the package and lay out on cardboard or other protective surface to avoid damage. Check the contents are correct and free from damage before proceeding. If any parts are missing or damaged, please call our support line for immediate assistance.

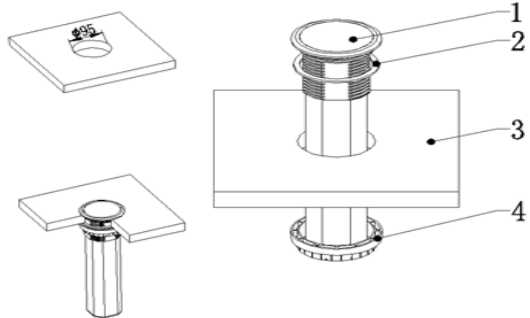
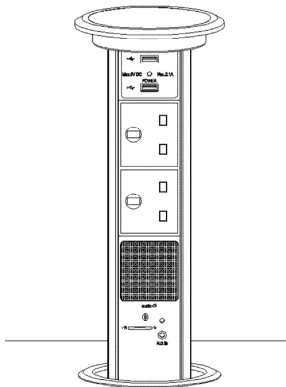
SAFETY INFORMATION

Install and use this product with care. Please read this instruction booklet thoroughly before installation and carefully follow all instructions. Do not use this product for any purpose or in any configuration not explicitly specified in this instruction manual. We hereby disclaim any and all liability for injury or damage arising from incorrect assembly, mounting or usage of this product.

****CAUTION****

This motorised pop-up must be securely installed onto a solid horizontal surface.

INSTALLATION DIAGRAM



(1)Product body (2)Silicone Pad (3)Worktop (4)Locking Ring

TECHNICAL PARAMETERS

Rated voltage range: AC95V-250V

Rated frequency: 50HZ / 60HZ

Rated current: 13A

External dimensions: 490mm * 112mm

Hole cut-out diameter: $\phi 95\text{mm}$

USB supply current: USB-A 2100mA (2.1A) 5.0V
USB-C 3000mA (3.0A) 5.0V

SycamoreLED.com

LS26 8XT

Technical helpline : 0113 2866686

*Please email sales@sycamoreled.com to register your product

USAGE SUGGESTIONS

- Kitchen Worktops
- Bedroom Furniture
- Office Desks
- Hotel Dressing Tables
- Static Caravans
- Reception Desks

1. Use a suitable hole cutter to make a 95mm hole in the worktop(3).
2. Fix the Silicone pad(2) onto the Product body(1).
3. Insert the product body (1) into the 95mm hole in the worktop(3).
4. Rotate the Locking Ring onto the product till the top tightly.

Your installation should now be successful.

KEY FEATURES

1. **Accidental Operation Protection:** This product is fitted with an automatic delay timer to prevent accidental operation. Press the button on the top of the unit for 5 seconds to enable the motorized raise/lower function. This function works to protect both children and animals.

2. **Light design:** Dim Green (static): The unit is in a lowered position and is ready to be used.

Bright Blue (flashing): A raise operation is currently in progress.

Dim Blue (flashing): The unit has been paused during a raise operation. Dim Blue (static): The unit is fully raised and ready for use.

Bright Green (flashing): A lowering operation is currently in progress.

Dim Green (flashing): The unit has been paused during a lowering operation.

Yellow (flashing): The anti collision function has activated during a raise operation.

Red (flashing): The anti pinch function has activated during a lowering operation.

3. **Anti pinch function:** If the unit is obstructed during a closing operation, the anti pinch function will reverse the direction of travel momentarily, and then pause all movement. The operation LED will flash red to indicate that the anti pinch function has been activated. When the button at the top of the unit is pressed again, the unit will fully raise and return to normal operation.

4. **Anti-collision function:** If the unit encounters an obstruction during a raise operation, the anti collision function will activate and the unit will pause. To indicate that the anti obstruction function has activated, the indicator LED will flash yellow. Once the obstruction has been cleared, the unit can be returned to normal operation by pressing the button on the top of the unit once again.

5. **One key design:** This item has been designed with simplicity and ease of use in mind. For this reason, all operations are controlled using a single button on the top of the unit.

6. **Water resistant design:** In a closed state, this product is designed to prevent water ingress by preventing spill-ages from entering the product body and potentially leaking into the mains sockets.

7. **USB charging:** This unit is equipped with 1 x USB-A & 1 X USB-C charge sockets. This allows portable devices to be charged from the convenience of your worktop.

8. **Qi induction charging** is incorporated into the lid. Therefore, once a Qi enabled device is placed on the lid, the device will automatically charge.

9. **Speakers:**

Bluetooth

- Turn the volume switch on the panel until the LED light flashes green and red.

- Turn on the Bluetooth settings on your device and connect to 'HYXXXX-TLXXXX', the speaker will beep when the devices are successfully paired.

- To disconnect, turn the volume switch down until the LED light is off, or disconnect your device from the speaker.

- The speaker will beep to confirm disconnection and the LED will flash red and green.

AUX Connection

10. - Use a standard 3.5mm audio jack cable to connect your device to the speaker via a cable. Once connected, LED light will be green.

Product does not support headphone or microphone function.

11. Unit motor function will shut off after 5 minutes of being idle. To reactivate hold down the power button for 5

Thank You for using this worktop solution!