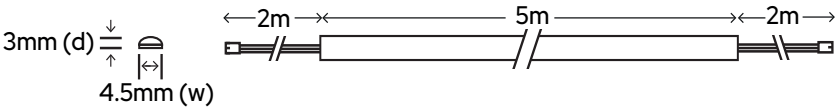
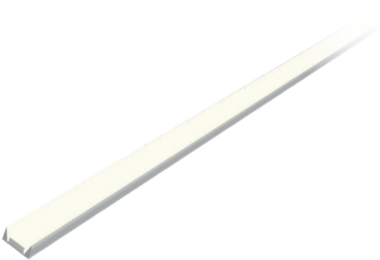




- Ultra slim - suitable for narrow spaces
- SOB Technology (SMD On Board) - Provides a higher luminous efficacy than COB LED strips.
- Perfect for applications where maximum output with lower energy consumption is critical
- 2m cable on both ends
- Cut marks every 28mm
- Slim-line profiles available (surface, recessed & recessed angled), listed over the page
- 5 Year Guarantee



Part Code	Description	Voltage	Wattage Per Metre	Kelvins	LED's Per Metre	Lumens Per Watt	Cut Marks	Cable Length
SY2460WW-3	Veil 3m Reel Warm White	24Vdc	6W	2700K	288	100 lm	28mm	2m at both ends
SY2460NW-3	Veil 3m Reel Natural White	24Vdc	6W	4000K	288	108 lm	28mm	2m at both ends
SY2460WW-5	Veil 5m Reel Warm White	24Vdc	6W	2700K	288	100 lm	28mm	2m at both ends
SY2460NW-5	Veil 5m Reel Natural White	24Vdc	6W	4000K	288	108 lm	28mm	2m at both ends

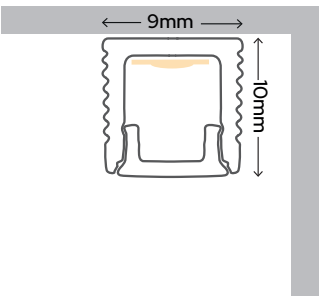
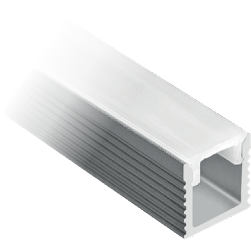
LED Drivers

Part Code	Description
SY2499-15	15W 24Vdc LED Driver (max 2.5m)
SY2499-30	30W 24Vdc LED Driver (max 5m)
SY2499-60	60W 24Vdc LED Driver (max 10m)



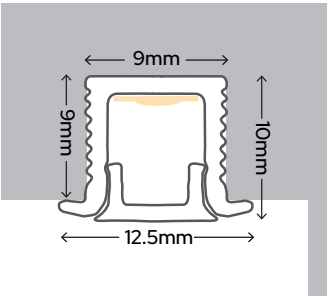
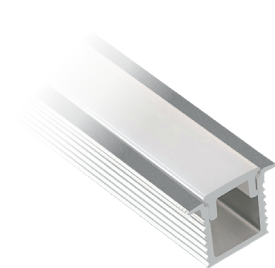
- 2.5m length
- Includes opal diffuser
- Includes 4 end caps per 2.5m
- Surface mounted also includes 4 mounting clips per 2.5m
- Spare end caps and mounting clips are available to purchase separate

## Surface



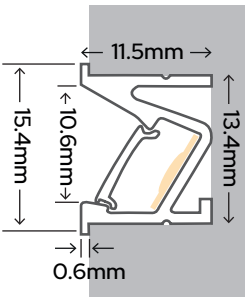
Part Code	Description
SY8301	2.5m Strim Surface Profile Aluminium/Opal Diffuser

## Recessed



Part Code	Description
SY8302	2.5m Strim Recessed Profile Aluminium/Opal Diffuser

## Recessed Angled



Part Code	Description
SY8303	2.5m Strim Recessed Angled Profile Aluminium/Opal Diffuser