

Thank you for purchasing this SycamoreLED.com product.

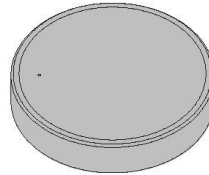
Please make sure instructions are followed carefully prior to and during installation and product is not altered, otherwise warranty may not be valid. For technical support or warranty information please visit www.sycamoreLED.com, or call our dedicated technical helpline +44 (0)113 2866686.

IMPORTANT—Please read prior to installation

- 1) Please read these instructions carefully before commencing any work
- 2) Please retain these instructions for future reference
- 3) **This unit must be installed by a qualified electrician in accordance with the IEE wiring regulations and building regulations**
- 4) To prevent electrocution switch the power off at the mains supply before installing or maintaining this fitting

INSTALLATION INSTRUCTIONS

This product uses 2.4G radio frequency technology, fast transmission speed, not easy to be interfered, and compatible with other 2.4G products of our company. The wireless signal is in the ISM frequency band and meets the regulatory requirements of various countries. Equipped with magnetic base and double-sided adhesive tape, it can be easily installed anywhere.



2.4G Dimmer-10P

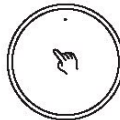
Electrical parameters:

Battery: CR2450

Stand-by Current:

Signal Strength: 6db

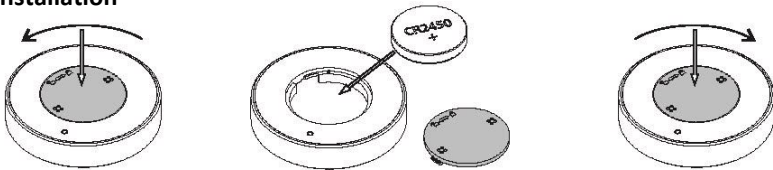
Frequency Band: 2.420-2.4835GHz



Short touch: Turn on or turn off

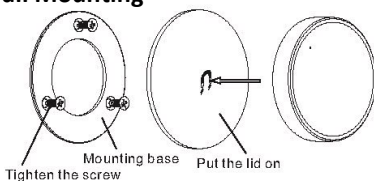
Long touch: Adjust brightness

1. Battery Installation



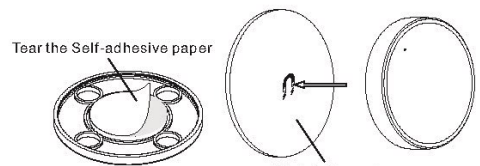
When the sensor unresponsive, indicate LED flashes or off, you need to replace the battery. When replacing the battery, please hold the touch area with your finger, and then insert the battery to initialize the remote control. If the red light keeps flashing, please wait for 10 seconds before performing normal touch operation.

2. Wall Mounting



Tighten the screw
Mounting base
Put the lid on

Use the screw



Tear the Self-adhesive paper

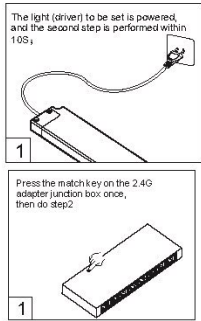
Stick to the wall

Use the Self-adhesive paper

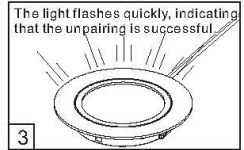
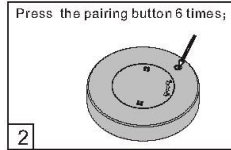
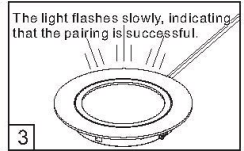
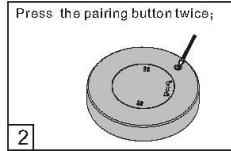
3. Pairing and Unpairing



The control box and remote-controller must be paired before the first application



Pairing:



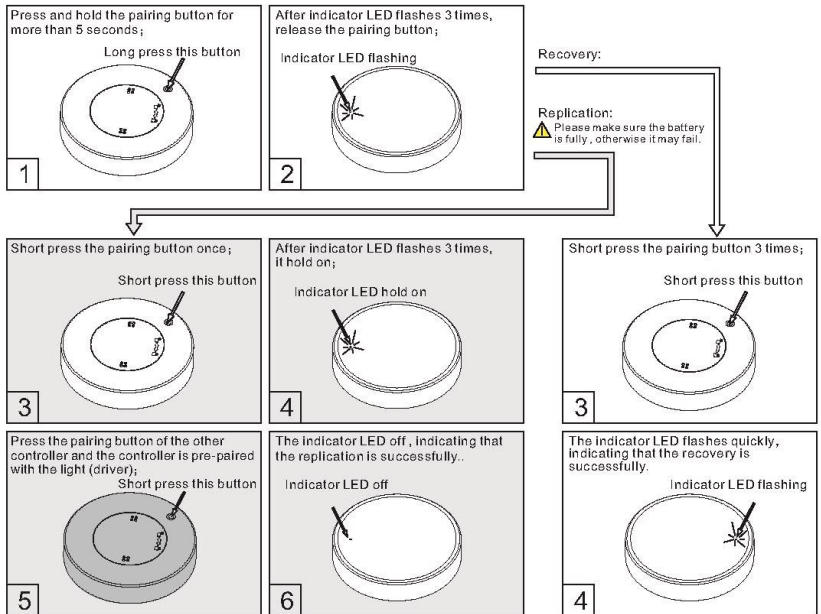
Unpairing:



The receiver can store up to 3 sets of pairing codes. When a fourth remote control is paired, it will automatically cover the first one. If you need to connect more controllers, see the next section.

3. Pairing Code Replication and Recovery

Each controller has a unique pairing code at the factory. When multiple controllers are required to control one or more lights (drivers), you can pair one controller first and then copy the other controllers to the same pairing code as this controller.



CARE IN USE

- Please note this fitting has non replaceable parts
- Always switch off or disconnect from the mains when cleaning the product.
- We recommend cleaning with a soft dry cloth. Do not use scourers, abrasives or chemical cleaners.
- Do not allow moisture to come into contact with electrical parts
- This luminaire should not be disposed of with normal household rubbish. When a replacement is purchased, this luminaire should be returned to the retailer to safely dispose of (WEEE Directive effective July 2006—Waste from Electrical & Electronic Equipment)

SycamoreLED.com
 LS26 8XT

