



SUSTAINABILITY
MATTERS.

sycamoreLED.com



NEW LIGHTING COLLECTION / 2022



INCLUDING THE NOUVEAU NOIR RANGE

WELCOME TO OUR NEW PRODUCT COLLECTION

Sycamore Lighting has been at the forefront of lighting innovation since 1998. Our dedication to quality has resulted in sustained growth by offering a diverse range of lighting and the very latest in technology. Major investment in new technologies and personnel, together with state of the art testing and training facilities has enabled us to cross over into different market sectors, whilst also retaining our reputation as a major supplier of lighting and control systems to the KBB markets throughout the UK and Europe.

NOUVEAU NOIR

NOUVEAU NOIR RANGE

We have introduced an on-trend collection of light fittings and accessories in a stylish matt black finish. This selection of stunning fittings would work well within a contemporary setting along side stylish dark coloured units and worktops for a sophisticated scheme.



SUSTAINABILITY
MATTERS.

VISIT OUR WEBSITE TO VIEW OUR
SUSTAINABILITY MATTERS PROMISE.



ALL PRODUCTS ARE COVERED BY A 5-YEAR WARRANTY
Excludes battery operated products, power converters & motorised pop ups

CABINET LIGHTING

NOUVEAU
NOIR

SOLARIS DIFFUSED RECTI LIGHT



PART CODE & DESCRIPTION

Solaris Diffused Recti Light Matt Black SY8951BL

COMPATIBLE POWER CONVERTERS

8W 12Vdc LED Power Converter (1-2 lights)	SY9980B
15W 12Vdc LED Power Converter (1-4 lights)	SY9739B
20W 12Vdc LED Power Converter (1-5 lights)	SY7350C
30W 12Vdc LED Power Converter (1-6 lights)	SY7715A



SOLARIS MULTI POINT RECTI LIGHT



PART CODE & DESCRIPTION

Solaris Multi Point Recti Light Matt Black SY7923BL

COMPATIBLE POWER CONVERTERS

15W 12Vdc LED Power Converter (1-3 lights)	SY9739B
20W 12Vdc LED Power Converter (1-4 lights)	SY7350C
30W 12Vdc LED Power Converter (1-6 lights)	SY7715A



The diffused rectangular version of the Solaris surface mounted designer fitting has a super slim profile, in a stylish matt black finish. The Solaris also has a 120 degree beam angle, which fills cabinets or work surfaces and eliminates dark spots.

TECHNICAL INFO

Finish	Matt Black
Power Supply	12Vdc
Cable Length	1.5m
Colour Temperature	Natural White (4000K - 4500K)
Wattage	3.5W
IP Rating	IP20
Colour Rendering Index	Ra 85
Total Lumens	156lm
Beam Angle	120°
Dimensions (mm)	190 (w) x 76 (d) x 6 (h)

COMPATIBLE ACCESSORIES

Kinetic Wireless Switching (inc. dimming)	Page 14/15
Wi-Fi 4 Zone Controls	Page 16
Sensors, Switches & Dimmers	Website
2m (SY7183) or 5M (SY7183/5) Extension Cable	

The multi point rectangular version of the Solaris surface mounted designer fitting has a super slim profile, in a stylish matt black finish. The Solaris also has a 120 degree beam angle, which fills cabinets or work surfaces and eliminates dark spots.

TECHNICAL INFO

Finish	Matt Black
Power Supply	12Vdc
Cable Length	1.5m
Colour Temperature	Natural White (4000K - 4500K)
Wattage	5W
IP Rating	IP20
Colour Rendering Index	Ra 84
Total Lumens	440lm
Beam Angle	120°
Dimensions (mm)	190 (w) x 70 (d) x 4 (h)

COMPATIBLE ACCESSORIES

Kinetic Wireless Switching (inc. dimming)	Page 14/15
Wi-Fi 4 Zone Controls	Page 16
Sensors, Switches & Dimmers	Website
2m (SY7183) or 5M (SY7183/5) Extension Cable	

CABINET LIGHTING

NOUVEAU
NOIR

VEGA MAX



PART CODE & DESCRIPTION

Vega Max Brushed Nickel Warm White or Natural White	SY8887WW or NW
Vega Max Matt Black Warm White or Natural White	SY8887BL/WW or NW

COMPATIBLE POWER CONVERTERS

15W 12Vdc LED Power Converter (1-3 lights)	SY9739B
20W 12Vdc LED Power Converter (1-4 lights)	SY7350C
30W 12Vdc LED Power Converter (1-6 lights)	SY7715A



VEGA LED FLAT PANEL



PART CODE & DESCRIPTION

Vega Flat Panel Matt Black/Warm White	SY8949BL/WW
Vega Flat Panel Matt Black/Natural White	SY8949BL/NW

COMPATIBLE POWER CONVERTERS

8W 12Vdc LED Power Converter (1-2 lights)	SY9980B
15W 12Vdc LED Power Converter (1-4 lights)	SY9739B
20W 12Vdc LED Power Converter (1-5 lights)	SY7350C
30W 12Vdc LED Power Converter (1-6 lights)	SY7715A



The Vega Max is a super slim diffused cabinet light with a magnetic bezel for ease of fitting. It has been designed to offer a superior light output and has a diffused cover with no visible LED points. The fitting also has enhanced curved edges in a stylish matt black or brushed nickel finish.

TECHNICAL INFO

Finish	Brushed Nickel or Matt Black
Power Supply	12Vdc
Cable Length	1.5m
Colour Temperature	Warm White (3000K - 3500K) or Natural White (4000K - 4500K)
Wattage	5W
IP Rating	IP20
Colour Rendering Index	Ra>80
Total Lumens	240lm
Beam Angle	120°
Dimensions	200 (w) x 100 (d) x 6.5 (h)

COMPATIBLE ACCESSORIES

Kinetic Wireless Switching (inc. dimming)	Page 14/15
Wi-Fi 4 Zone Controls	Page 16
Sensors, Switches & Dimmers	Website
2m (SY7183) or 5M (SY7183/5) Extension Cable	

The Vega has been designed to offer a superior light output and has a diffused cover to mimic the appearance of halogen cabinet lights with no visible LED points. The fitting also has unique magnetic fixing and enhanced curved matt black edges.

TECHNICAL INFO

Finish	Matt Black
Power Supply	12Vdc
Cable Length	1.5m
Colour Temperature	Warm White (3000K - 3500K) or Natural White (4000K - 4500K)
Wattage	3.5W
IP Rating	IP20
Colour Rendering Index	WW - Ra 80, NW - Ra 86
Total Lumens	WW - 125lm, NW - 143lm
Beam Angle	120°
Dimensions	99 (w) x 99 (d) x 6.5 (h)

COMPATIBLE ACCESSORIES

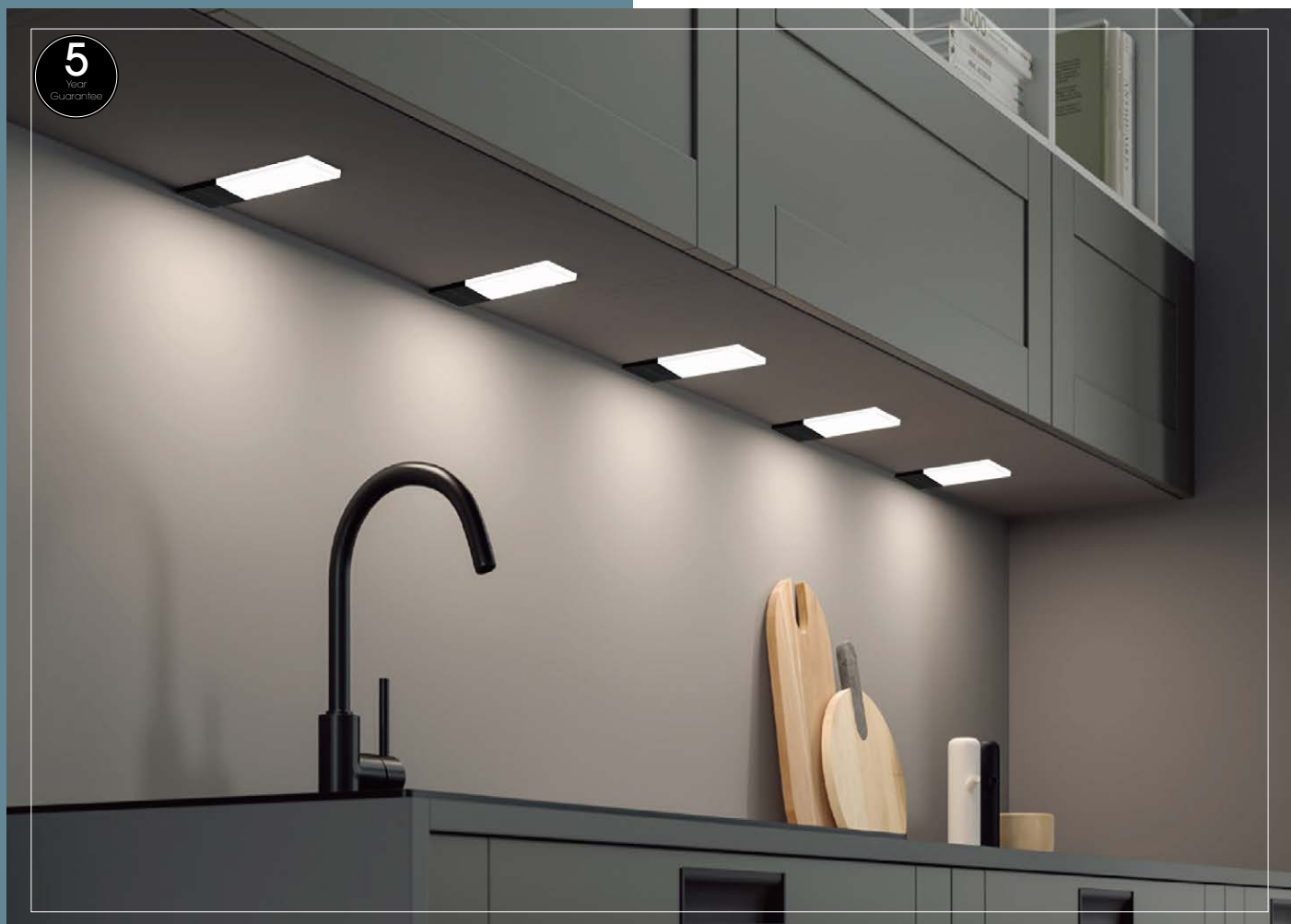
Kinetic Wireless Switching (inc. dimming)	Page 14/15
Wi-Fi 4 Zone Controls	Page 16
Sensors, Switches & Dimmers	Website
2m (SY7183) or 5M (SY7183/5) Extension Cable	

CABINET LIGHTING

VEGA MODA

NOUVEAU
NOIR

5
Year
Guarantee

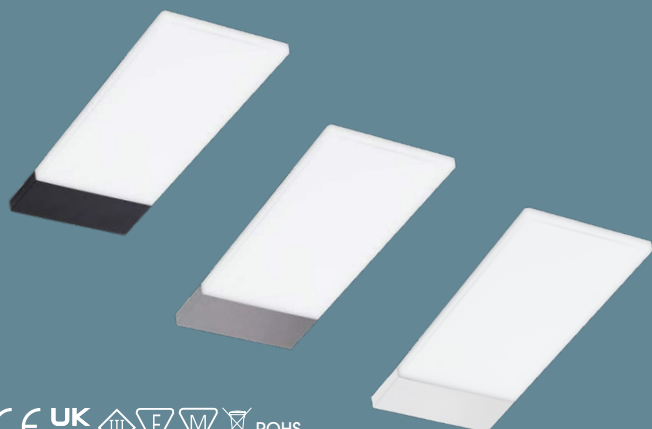


PART CODE & DESCRIPTION

Vega Moda Matt Black/Natural White	SY9805/BL
For brushed nickel or white finish please purchase light above, and purchase the covers separate, listed below.	
Vega Moda Brushed Nickel Cover	SY9806/BN
Vega Moda White Cover	SY9806/WH

COMPATIBLE POWER CONVERTERS

8W 12Vdc LED Power Converter (1-3 lights)	SY9980B
15W 12Vdc LED Power Converter (1- 6 lights)	SY9739B



The Vega Moda is a discreet slim-line cabinet light with a diffused illuminated panel for a super smooth appearance. Available with either matt black, brushed nickel or white magnetic bezels, and an attractive edge lit feature, the Vega Moda would fit perfectly into a contemporary setting.

TECHNICAL INFO

Finish	Matt Black/Brushed Nickel/White
Power Supply	12Vdc
Cable Length	2m
Guarantee	5 Years
Colour Temperature	Natural White (4000K - 4500K)
Wattage	2.2W
IP Rating	IP20
Colour Rendering Index	Ra >86
Total Lumens	150lm
Beam Angle	120°
Dimensions	190 (w) x 80 (d) x 6 (h)

COMPATIBLE ACCESSORIES

Kinetic Wireless Switching (inc. dimming)	Page 14/15
Wi-Fi 4 Zone Controls	Page 16
Sensors, Switches & Dimmers	Website
2m (SY7183) or 5M (SY7183/5) Extension Cable	



CABINET LIGHTING

**NOUVEAU
NOIR**

SIRIUS SUPER SLIM



This diffused cabinet light is surface mounted and has a super slim design with a magnetic cover to conceal the installation fixings. This sleek matt black fitting is available in a choice of natural white or warm white.

TECHNICAL INFO

Finish	Matt Black
Power Supply	12Vdc
Cable Length	1.5m
Colour Temperature	Warm White (3000K - 3500K) or Natural White (4000K - 4500K)
Wattage	2W
IP Rating	IP20
Colour Rendering Index	WW - Ra 80, NW - Ra 86
Total Lumens	WW - 125lm, NW - 143lm
Beam Angle	120°
Dimensions	74 (dia) x 7(h)

PART CODE & DESCRIPTION

Sirius Super Slim Matt Black/Warm White	SY8935A/BLWW
Sirius Super Slim Matt Black/Natural White	SY8935A/BL

COMPATIBLE POWER CONVERTERS

8W 12Vdc LED Power Converter (1-3 lights)	SY9980B
15W 12Vdc LED Power Converter (1-6 lights)	SY9739B



COMPATIBLE ACCESSORIES

Kinetic Wireless Switching (inc. dimming)	Page 14/15
Wi-Fi 4 Zone Controls	Page 16
Sensors, Switches & Dimmers	Website
2m (SY7183) or 5M (SY7183/5) Extension Cable	

SIRIUS SUPER SLIM ANGLED



This diffused angled cabinet light is surface mounted and has a super slim design with a magnetic cover to conceal the installation fixings. Available only in warm white 2700K.

TECHNICAL INFO

Finish	Matt Black
Power Supply	12Vdc
Cable Length	1.5m
Colour Temperature	Warm White (2700K)
Wattage	2W
IP Rating	IP20
Colour Rendering Index	Ra 81
Total Lumens	52lm
Beam Angle	120°
Dimensions	74 (dia) x 22 (h)

PART CODE & DESCRIPTION

Sirius Super Slim Angled Matt Black/Warm White	SY8935B/2700K
---	---------------

COMPATIBLE POWER CONVERTERS

8W 12Vdc LED Power Converter (1-3 lights)	SY9980B
15W 12Vdc LED Power Converter (1-6 lights)	SY9739B



COMPATIBLE ACCESSORIES

Kinetic Wireless Switching (inc. dimming)	Page 14/15
Wi-Fi 4 Zone Controls	Page 16
Sensors, Switches & Dimmers	Website
2m (SY7183) or 5M (SY7183/5) Extension Cable	

CABINET LIGHTING

NOUVEAU
NOIR

VEGA SUR/REC LIGHT



The Vega LED Cabinet light features a diffused cover, so there are no visible LED points in the fitting, and also has a 120 degree beam angle which fills cabinets or work surfaces, eliminating dark spots. Now available in matt black finish.

TECHNICAL INFO

Finish	Matt Black
Power Supply	12Vdc
Cable Length	1.5m
Colour Temperature	Natural White (4000 - 4500K)
Wattage	2.3W
IP Rating	IP20
Colour Rendering Index	Ra 87
Total Lumens	158lm
Beam Angle	120°
Dimensions	Rec. 64 (dia) x 12 (d) 57 (cut out) Sur. 64 (dia) x 16 (h)

PART CODE & DESCRIPTION

Vega Recessed Matt Black Natural White	SY7945BL/NW
Vega Sur/Rec Matt Black Natural White	SY7946BL/NW

COMPATIBLE POWER CONVERTERS

8W 12Vdc LED Power Converter (1-3 lights)	SY9980B
15W 12Vdc LED Power Converter (1-5 lights)	SY9739B
20W 12Vdc LED Power Converter (1-6 lights)	SY7350C



COMPATIBLE ACCESSORIES

Kinetic Wireless Switching (inc. dimming)	Page 14/15
Wi-Fi 4 Zone Controls	Page 16
Sensors, Switches & Dimmers	Website
2m (SY7183) or 5M (SY7183/5) Extension Cable	

VEGA DESIGNER TRI-LIGHT



The Vega LED Designer Tri-Light features a diffused cover, so there are no visible LED points in the fitting, and also has a 120 degree beam angle which fills cabinets or work surfaces, eliminating dark spots. Now available in matt black finish.

TECHNICAL INFO

Finish	Matt Black
Power Supply	12Vdc
Cable Length	1.5m
Colour Temperature	Natural White (4000 - 4500K)
Wattage	2.3W
IP Rating	IP20
Colour Rendering Index	Ra 87
Total Lumens	158lm
Beam Angle	120°
Dimensions	170 (w) x 140 (d) x 26 (h)

PART CODE & DESCRIPTION

Vega Designer Tri-Light Matt Black Natural White	SY7947BL/NW
---	-------------

COMPATIBLE POWER CONVERTERS

8W 12Vdc LED Power Converter (1-3 lights)	SY9980B
15W 12Vdc LED Power Converter (1-5 lights)	SY9739B
20W 12Vdc LED Power Converter (1-6 lights)	SY7350C



COMPATIBLE ACCESSORIES

Kinetic Wireless Switching (inc. dimming)	Page 14/15
Wi-Fi 4 Zone Controls	Page 16
Sensors, Switches & Dimmers	Website
2m (SY7183) or 5M (SY7183/5) Extension Cable	

CABINET/PLINTH LIGHTING

NOVA PRO LITHIUM BATTERY LIGHT

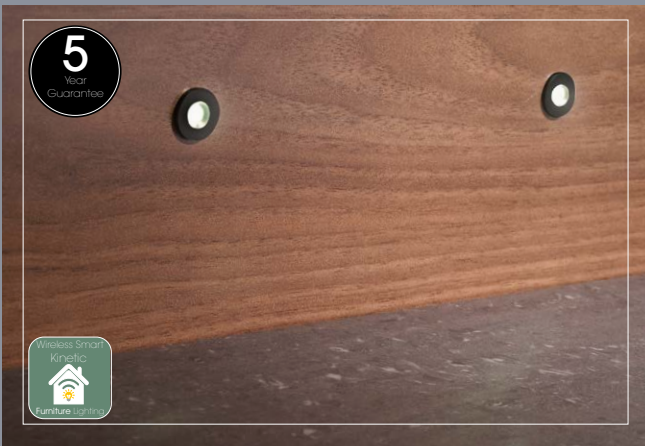


PART CODE & DESCRIPTION

Nova Pro 205mm Lithium Battery Light	SY9039
Nova Pro 305mm Lithium Battery Light	SY9040
Nova Pro 405mm Lithium Battery Light	SY9041
Nova Pro 505mm Lithium Battery Light	SY9042



15MM PLINTH LIGHT



PART CODE & DESCRIPTION

4 Light Kit (Stainless Steel) Warm/Cool	SY9936WW or CW
10 Light Kit (Stainless Steel) Warm/Cool	SY9928A/WW or CW
Individual (Stainless Steel) Warm/Cool	SY9937WW or CW
For black finish please purchase kit required from above, and purchase the covers separate, listed below.	
Black Cover (individual)	SY9939BK



The new Nova Pro lithium battery light is perfect for situating within cabinets, wardrobes or drawers. The unit features a integrated PIR sensor, to automatically turn the light on when movement is sensed within a 4 metre range. When no further movement is detected after 20 seconds, the unit will turn itself off.

It features a slim, discreet profile, with a diffused natural white LED illuminated panel. It is also easily removed from its magnetic brackets for charging. USB-C charging cable included.

Available in four lengths - 205mm, 305mm, 405mm & 505mm.

The battery light will last for one month based on 5 minutes use per day, and takes 2.5 hours to charge from empty to fully charged.

TECHNICAL INFO

Finish	Silver
Lithium Battery	5V
Battery Capacity	600mAh - 2400mAh
Lighting Time	1 Month (based on 5 minutes usage per day without charge)
Re-charge Time	2.5 hours from no charge to full
Charging	Via USB cable (included)
Colour Temperature	Natural White (4000K - 4500K)
PIR Sensor Max Distance	4m
Dimensions	38 (d) x 9 (h)
Guarantee	12 Months



This small and discreet recessed plinth light is now available with a matt black finish, and with either cool or warm white LED.

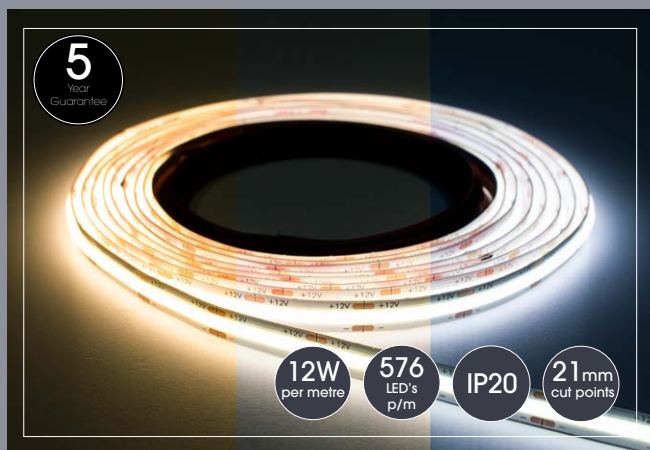
The 15mm plinth lights are available in a 4 or 10 light kit, which includes the power converter, Add on lights are also available, up to a maximum of 10 lights can be run per power converter.

TECHNICAL INFO

Finish	Stainless Steel/Matt Black
Power Supply	12Vdc (included)
Cable Length	2m
Colour Temperature	Warm White (3000K - 3500K) or Cool White (6000K - 6500K)
Wattage	0.2W per fitting
IP Rating	IP67
Dimensions	15 (dia) x 39.5 (d) 10 (cut out)

COB LED STRIP

TUNABLE COB LED STRIP 5M REEL



PART CODE & DESCRIPTION

Tunable COB 5m Reel SY2450

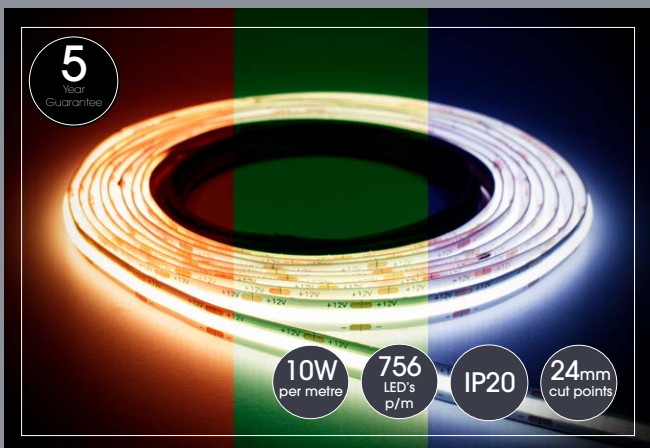
Accessories

Remote Control & Receiver Kit (Wi-Fi Series)	SY5699B
Receiver (Wi-Fi Series)	SY7699B
Wall Mounted Control	SY8810/TUN
2m Reconnection Distribution Cable	SY2454
30mm Corner Connector (Flexi)	SY2456
Direct Connector	SY2452

COMPATIBLE POWER CONVERTERS

50W 12Vdc LED Power Converter (max 4m)	SY7351D
100W 12Vdc LED Power Converter (max 8m)	SY7440A

RGB COB LED STRIP 5M REEL



PART CODE & DESCRIPTION

RGB COB 5m Reel SY2451

Accessories

Remote Control & Receiver Kit (Wi-Fi Series)	SY7598B/WH*
Additional Receiver (Wi-Fi Series)	SY7538B
Wall Mounted Control	SY8810/RGB
2m Reconnection Distribution Cable	SY2453
30mm Corner Connector (Flexi)	SY2455
Direct Connector	SY2452
100mm Bridge Cable	SY7341A
1m Bridge Cable	SY7343A
2m Bridge Cable	SY7345A
Y-Splitter	SY7347A



Tunable white enables the user to choose their desired colour temperature, from warm white (2700k) to natural white (4000k) to cool white (6000k) by simply using a hand held remote control, the wall mounted controller, or from a smart-phone or tablet using a free downloadable App. This product also utilises smooth dimming technology, so the unit can be set to totally suit customer requirements. Power converter, remote control & receiver required, purchased separate. Receiver features built in Wi-Fi capabilities.

The high output COB LED strip features LED points within close proximity to each other, creating a uniform light output with no spotting, perfect for illuminating handle-less kitchen designs. The strip has a depth of only 1.7mm so is ideal for situating underneath a worktop, and is suitable for installation on all coloured handle-less profiles without the need for an aluminium extrusion

This COB LED strip is supplied with very high bond (VHB) 3M tape.

TECHNICAL INFO

Power Supply	12Vdc
Adhesive	3M VHB
Cable Length	2m at both ends
Colour Temperature	Tunable White (3000K/4000K/6000K)
Colour Rendering Index	> Ra 90
Wattage	12W/m
IP Rating	IP20
Cut Marks	Every 21mm
LEDs per metre	576



RGB colour changing strip enables the user to choose from a wide variety of colours by simply using a hand held remote control, the wall mounted controller, or from a smart-phone or tablet using a free downloadable App. This product also utilises smooth dimming technology, so the unit can be set to totally suit customer requirements. Power converter, remote control & receiver required, purchased separate. Receiver features built in Wi-Fi capabilities.

The product also utilises smooth dimming technology, so the unit can be totally set to suit customer requirements. The LED strip is supplied with very high bond (VHB) tape. Please note that the strip must be installed onto a clean, dry surface. Various extrusions are available for our LED strip, see page 11.

TECHNICAL INFO

Power Supply	12Vdc
Adhesive	3M VHB
Cable Length	2m at both ends
Colour Temperature	RGB Colour Changing
Wattage	10W/m
IP Rating	IP20
Cut Marks	Every 24mm
LEDs per metre	756

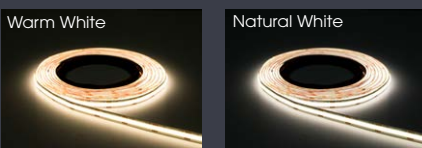
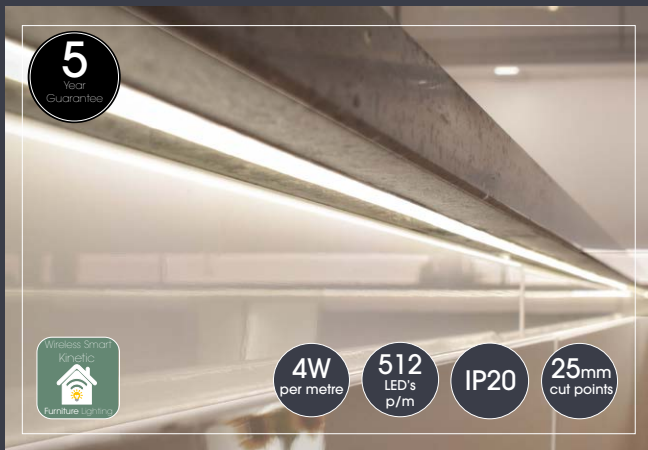
COMPATIBLE POWER CONVERTERS

50W 12Vdc LED Power Converter (max 5m)	SY7351D
100W 12Vdc LED Power Converter (max 10m)	SY7440A

*Remote control also available in black please use code SY7598B/BL

COB & ARC LED STRIP

SUPERIOR COB LED STRIP 5M REEL



PART CODE & DESCRIPTION

Superior COB 5m Reel
Warm or Natural White SY9001WW or NW

COMPATIBLE POWER CONVERTERS

15W 12Vdc LED Power Converter (max 3m)	SY9739B
20W 12Vdc LED Power Converter (max 5m)	SY7350C
30W 12Vdc LED Power Converter (max 7m)	SY7715A

This new high output COB LED strip features LED points within close proximity to each other, creating a uniform light output with no spotting, perfect for illuminating handle-less kitchen designs. The strip has a depth of only 1.7mm so is ideal for situating underneath a worktop, and is suitable for installation on all coloured handle-less profiles without the need for an aluminium extrusion. This LED strip also comes with VHB (Very High Bond) tape

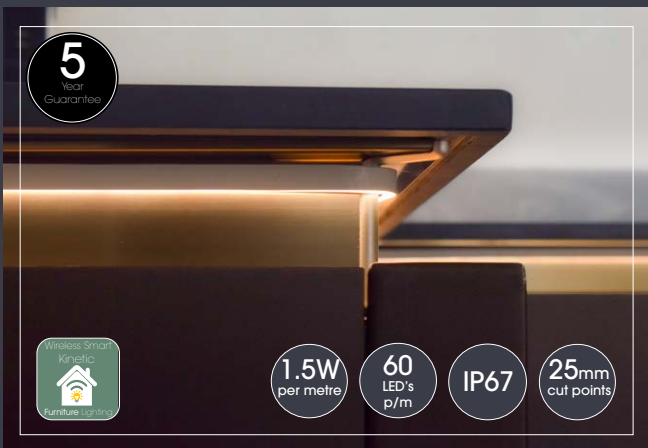
TECHNICAL INFO

Power Supply	12Vdc
Adhesive	3M VHB
Cable Length	2m at both ends
Colour Temperature	Warm White (3000K - 3500K) or Natural White (4000K - 4500K)
Colour Rendering Index	> Ra 90
Wattage	4W/m
IP Rating	IP20
Cut Marks	Every 25mm
LEDs per metre	512

COMPATIBLE ACCESSORIES

Kinetic Wireless Switching (inc. dimming)	Page 14/15
Wi-Fi 4 Zone Controls	Page 16
Sensors, Switches & Dimmers	Website
2m (SY7183) or 5M (SY7183/5) Extension Cable	

ARC LED STRIP 5M REEL



PART CODE & DESCRIPTION

ARC 5m Reel Warm or Natural SY9026WW or NW

COMPATIBLE POWER CONVERTERS

8W 12Vdc LED Power Converter (max 5m)	SY9980B
15W 12Vdc LED Power Converter (max 10m)	SY9739B

The new super-slim ARC LED strip has been specifically designed for true handle-less and worktop lighting. However, it can also be used on plinths, within cabinets, and recessed into cabinetry to give a discreet look. At 4 x 7mm, it offers a discreet, dot-less uniform light line. It can be recessed into a worktop, or fitted to aluminium profile within a handle-less kitchen using the 3M VHB adhesive tape which is applied to each 5 metre length of strip.

There are 2 metre cables with connectors on each end, and it can be cut at 25mm intervals, therefore cutting down on waste. The super-slim ARC can negotiate 90 degree internal and external corners without creating any dark spots, and at 1.5W per metre, it is very energy efficient.

TECHNICAL INFO

Power Supply	12Vdc
Adhesive	3M VHB
Cable Length	2m at both ends
Colour Temperature	Warm White (3000K - 3500K) or Natural White (4000K - 4500K)
Wattage	1.5W/m
IP Rating	IP67
Cut Marks	Every 25mm
LEDs per metre	60

COMPATIBLE ACCESSORIES

Kinetic Wireless Switching (inc. dimming)	Page 14/15
Wi-Fi 4 Zone Controls	Page 16
Sensors, Switches & Dimmers	Website
2m (SY7183) or 5M (SY7183/5) Extension Cable	



MATT BLACK EXTRUSIONS

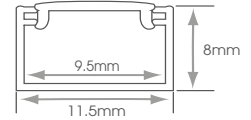


SLIM SURFACE MOUNTED & DIFFUSER



Mounting LED strip within an extrusion not only helps to keep runs straight and neat, it also assists with heat dissipation, therefore prolonging the life of the LED strip.

A diffuser finishes off the clean look, and provides protection from dust and water splashes. We have various styles available depending on the application. New matt black versions available, however we also supply aluminium finish, please visit our website for more details.

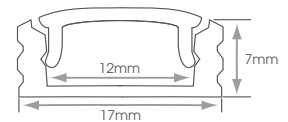


PART CODE & DESCRIPTION

2m Surface Mounted Extrusion Slim Matt Black with Opal Diffuser & Adhesive Back

SY7689BL

SURFACE MOUNTED & DIFFUSER

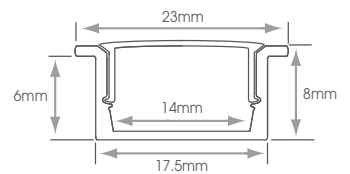


PART CODE & DESCRIPTION

2m Surface Mounted Extrusion Matt Black with Opal Diffuser & Mounting Clips

SY7482MB

RECESSED & DIFFUSER

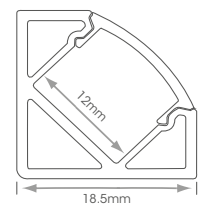


PART CODE & DESCRIPTION

2m Surface Recessed Matt Black with Opal Diffuser

SY7392MB

ANGLED & BLACK DIFFUSER



PART CODE & DESCRIPTION

2m Surface Angled Extrusion Matt Black with Black Diffuser & Mounting Clips

SY7409BL/B

POWER PORTS

NOUVEAU
NOIR

MOTORISED POP UP SOCKET WITH SPEAKER



TECHNICAL INFO

Finish	Black with Black Glass Top
Wireless Charging	Qi
UK Sockets	2
USB Ports	1 x USB-A (2.1A) & 1 x USB-C (3.0A)
Cable Length	1.9m
Guarantee	12 Months
Cut Out Size	95mm

PART CODE & DESCRIPTION

Motorised Pop Up Socket with Speaker/ USB/Qi Charging with Black Glass Top	SY9019BK/SPEAKER
---	------------------

MOTORISED POP UP SOCKET



TECHNICAL INFO

Finish	Black/Black Glass Top & White/White Glass Top
Wireless Charging	Qi
UK Sockets	3
USB Ports	1 x USB-A (2.1A) & 1 x USB-C (3.0A)
Cable Length	1.9m
Guarantee	12 Months
Cut Out Size	95mm

PART CODE & DESCRIPTION

Motorised Pop Up Socket with USB/ Qi Charging with Black Glass Top	SY9019BK
Motorised Pop Up Socket with USB/ Qi Charging with White Glass Top	SY9019WH

POWERTECH POP UP SOCKET



TECHNICAL INFO

Finish	Black Top/Silver Top/Stainless Effect Top
UK Sockets	3
USB Ports	2 x USB-A (2.0A Combined)
Guarantee	12 Months
Cut Out Size	102mm

PART CODE & DESCRIPTION

Powertech Pop Up Socket with Black Top	SY7192BK
Powertech Pop Up Socket with Silver Top	SY7192SI
Powertech Pop Up Socket with Stainless Effect Top	SY7192ST

EVOLINE BACK FLIP



TECHNICAL INFO

Finish	Black/Black Glass/Brass Effect/Grey Ceramic
UK Sockets	2
USB Ports	1 x USB-C (USB-A still available to order)
Guarantee	12 Months
Cut Out Size	88 x 215

PART CODE & DESCRIPTION

Evoline Back Flip Black Steel	SY9736BS/C
Evoline Back Flip Black Glass	SY9736BK/C
Evoline Back Flip Brass Effect	SY9736BE/C
Evoline Back Flip Grey Ceramic	SY9736GC/C

CEILING LIGHTING

SWITCHABLE DIMMABLE FIRE RATED LED CEILING LIGHT



PART CODE & DESCRIPTION

8W Switchable Downlight White	SY9004WH
For black, gold, chrome or brushed nickel bezel please purchase light above, and purchase the additional bezels separate, listed below.	
Matt Black Bezel	SY9005BL
Gold Bezel	SY9005G
Chrome Bezel	SY9006CC
Brushed Nickel Bezel	SY9005BN

COMPATIBLE ACCESSORIES

Kinetic Wireless Switching (inc. dimming) Page 14/15

Choose from 3000k, 4000k or 6000k by simply choosing your preference using the integrated switch on the fitting. It is also fully dimmable from most standard wall dimmers, and also includes the power converter. The light output is equivalent to a 50W GU10 halogen lamp, but due to the latest LED technology it uses 85% less energy, helping to save money and the environment.

The fitting is designed to allow loft insulation to be continuously run over the back of the fitting (IC Rated), and features a loop in - loop out clip block

TECHNICAL INFO

Power Supply	240V
Colour Appearance	Switchable - Warm, Natural or Cool
Colour Temperature	Switchable - 3000K, 4000K or 6000K
Guarantee	5 Years
Wattage	8W
Beam Angle	60°
Total Lumens	WW - 782lm NW - 916lm, CW - 805lm
IP Rating	IP65
Colour Rendering Index	>Ra 80
Finish	White (Chrome, Brushed Nickel, Matt Black & Gold available to purchase separate)
Cut Out Size	70mm

SWITCHABLE DIMMABLE FIRE RATED LED CEILING LIGHT



PART CODE & DESCRIPTION

6W Switchable Downlight White	SY9050WH
For black, chrome or brushed nickel bezel please purchase light above, and purchase the additional bezels separate, listed below.	
Matt Black Bezel	SY9051BK
Chrome Bezel	SY9051CC
Brushed Nickel Bezel	SY9051BN

COMPATIBLE ACCESSORIES

Kinetic Wireless Switching (inc. dimming) Page 14/15

Choose from 3000k, 4000k or 6000k by simply choosing your preference using the integrated switch on the front of the fitting. It is also fully dimmable from most standard wall dimmers, and also includes the power converter. The light output is equivalent to a 50W GU10 halogen lamp, but due to the latest LED technology it uses 85% less energy, helping to save money and the environment.

This ultra slim fitting is designed to allow loft insulation to be continuously run over the back of the fitting (IC Rated), and features a speed fit tool free loop in - loop out terminal. The colour appearance can be changed at any time without removing the fitting from the ceiling by simply removing the bezel.

TECHNICAL INFO

Power Supply	240V
Colour Appearance	Switchable - Warm, Natural or Cool
Colour Temperature	Switchable - 3000K, 4000K or 6000K
Guarantee	5 Years
Wattage	6W
Beam Angle	40°
Total Lumens	WW - 593lm NW - 680lm, CW - 635lm
IP Rating	IP65
Colour Rendering Index	>Ra 80
Finish	White (Chrome, Brushed Nickel, & Matt Black available to purchase separate)
Cut Out Size	65mm

KINETIC

SMART CONTROLS

Alexa, turn on kitchen lights



The new wireless Kinetic Switching system allows users to turn on their kitchen, bedroom or bathroom lighting in three different ways.

Lighting can be controlled manually by using the Wireless Kinetic Switch, through a Smart Phone or Tablet using the Smart Life App (free downloadable App via the QR code on the instruction leaflet), or by connecting it to a voice controlled intelligent personal assistant such as Amazon Alexa or Google Home.

Once connected, lighting can be operated with simple commands, such as "Alexa turn on kitchen lights" or "Google dim strip lights".

EASY DIMMING

Dimming is also possible, by using the 12V/24Vdc Furniture Lighting Receiver with built in dimming facility. 240V LED Lighting (with dimmable lamp fitted), and dimmable ceiling lighting can also be controlled using the 240v receiver. Simply holding down the switch activates the dimming process.

ENERGY SAVING

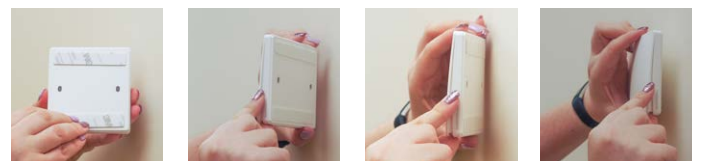
A small amount of kinetic energy is generated by the action of the clicking of the switch, which is converted to an electrical signal and sent to the receiver. The amount of energy used is very low, so the switch adheres to strict requirements on low power consumption & helps the environment.

WIRELESS SWITCHES - EASY TO INSTALL & RETRO-FIT

The Kinetic switches require no wiring or batteries which eliminates the need for installing back boxes, creating channels in walls and adjusting decor, thus speeding up the installation process and reducing labour time & costs.

The switch can be installed anywhere in the home, including the bathroom due to its IP67 rating. It can also be installed on a variety of surfaces, including glass, marble, ceramic tiles, and other smooth surfaces. The switches can be screwed to the surface, or stuck on with the adhesive pads supplied.

They can also be retro-fit onto existing back boxes as they are the same size as standard switches.



WIRELESS KINETIC DOOR SENSOR

The Kinetic Wireless door sensor switch (SY2446) is a battery free contact switch to turn lights on and off, so no batteries or wires are required.

When the door is opened the connected light switches on via a kinetic energy transfer to the receiver. Receiver required.

Control either 12/24V lighting, or 240V lighting including Ceiling Lighting & Extractor fans, in the following ways:



Wireless Wall Plate Switch

(No wiring or batteries required)



Smart Phone or Tablet

(Using a free App)



Alexa or Google Voice Control

Look for the logos for compatible products



Download the Smart Life app here:

IOS



ANDROID



12V/24V FURNITURE LIGHTING SMART WIRELESS RECEIVER

This receiver can be used to switch or dim 12/24vdc LED lighting.



TECHNICAL INFO	
Power Supply	12/24Vdc
Maximum Load	12Vdc - 36W, 24Vdc - 72W

PART CODE & DESCRIPTION	
12/24Vdc Furniture Lighting Receiver	SY2416

240V LIGHTING SMART WIRELESS RECEIVER

This receiver can be used to switch 240V LED lighting, including ceiling lighting & bathroom fans. You can also dim connected lights (with a dimmable light source).



TECHNICAL INFO	
Power Supply	240V
Maximum Load	100W

PART CODE & DESCRIPTION	
240V Lighting Receiver	SY8989/NEW

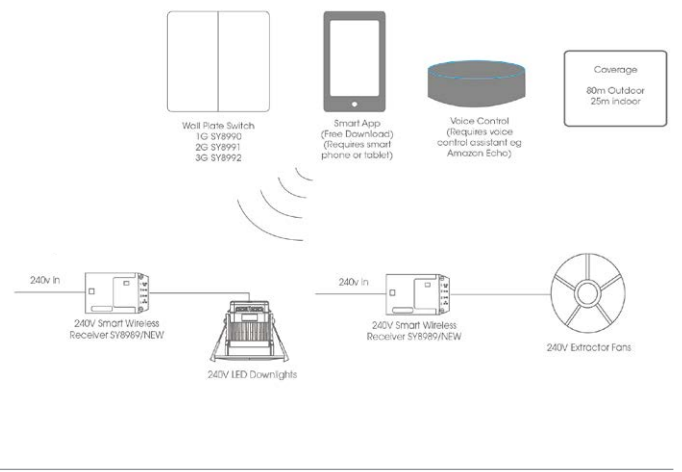
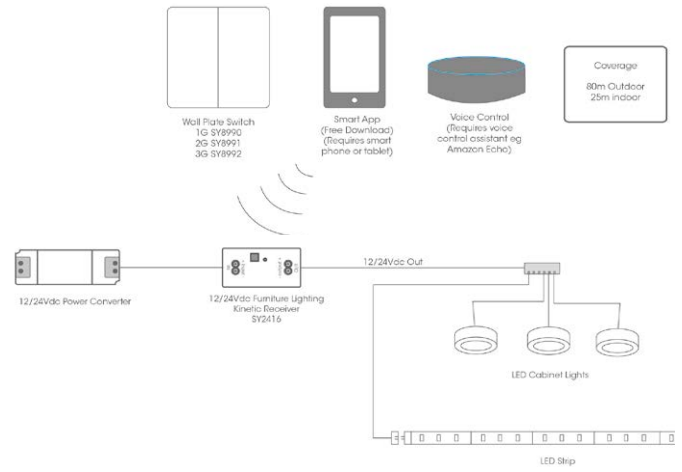
SMART KINETIC POWER CONVERTERS



WIRELESS KINETIC SWITCHES



WIRELESS KINETIC DOOR SENSOR



The smart all-in-one drivers combine the functionality of the 12Vdc furniture kinetic receiver, with a dimmable driver for low loads of 15W or 20W or less. This driver can be used with the kinetic wireless wall plate switches, or with the smart App or voice control.

PART CODE & DESCRIPTION	
15W 12Vdc Smart All-in-One Driver	SY8996
20W 12Vdc Smart All-in-One Driver	SY8999

TECHNICAL INFO	
Finish	White
IP Rating	IP67
Connection	Wireless
Fixing Method	Adhesive Backing or Screw

PART CODE & DESCRIPTION	
1 Gang Kinetic Switch	SY8990
2 Gang Kinetic Switch	SY8991
3 Gang Kinetic Switch	SY8992

TECHNICAL INFO	
Finish	White
IP Rating	IP20
Connection	Wireless
Fixing Method	Adhesive Backing

PART CODE & DESCRIPTION	
Kinetic Wireless Door Sensor	SY2446

WIRELESS

ZONE SMART CONTROLS

Our innovative zone remote control system allows wireless control of multiple LED lights in the palm of your hand, using a hand held remote, a smart device, or a wall mounted controller.

The new style receiver features built in Wi-Fi capabilities, so you can control your cabinet lights, plinth lights, strip lighting or any other 12Vdc lighting using your smart device, by downloading the App, which is free via the Apple store or Android Google Play. This will allow you to control your connected lights from anywhere in the world as long as you have a 4G or 5G network, or connected to any Wi-Fi network at your location.

Control LED lighting in the following ways:



Remote Control
(No wiring or cables required)



Smart Device
(Using a free downloadable App)



Wireless Wall Plate
(No wiring or cables required)

SINGLE COLOUR SINGLE ZONE

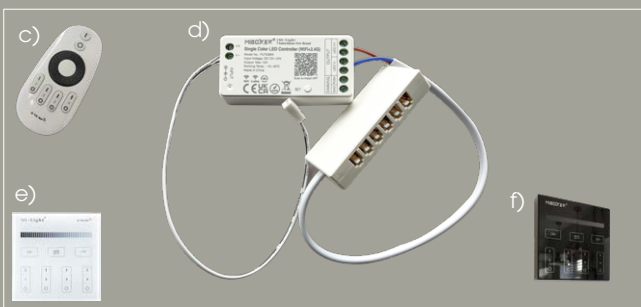


PART CODE & DESCRIPTION

(a) Single Zone Single Colour Receiver	SY8120
(b) Dimming/on/off Black Wall Plate	SY8121

This single zone/colour receiver can be used to control lights which are 240V. It can also be controlled by our standard remote control (c) SY9565, and/or the rotary dimmer switch (b) SY8121.

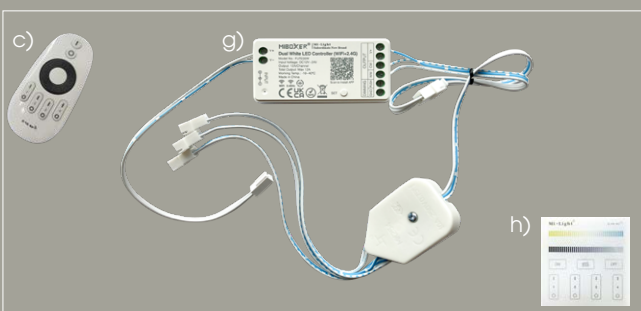
SINGLE COLOUR 4 ZONE



PART CODE & DESCRIPTION

(c + d) Single Colour Receiver & Remote Kit (Wi-Fi Series)	SY7541B
(d) Additional Receiver	SY7542B
(e) Wireless Wall Plate (White)	SY8810/DIM
New black accessories listed below	
(f) Wireless Wall Plate Black	SY8810DIM BL

TUNABLE WHITE (CCT) 4 ZONE



PART CODE & DESCRIPTION

(c + g) Tunable White Receiver & Remote Kit (Wi-Fi Series)	SY5699B
(g) Additional Receiver	SY7699B
(h) Wireless Wall Plate (White)	SY8810/TUNABLE

RGB COLOUR CHANGING 4 ZONE



PART CODE & DESCRIPTION

RGB Colour Changing Receiver & Remote Kit (Wi-Fi Series) White (i + j) or Black (k + j)	SY7598B/WH or BL
(j) Additional Receiver	SY7538B
(l) Wireless Wall Plate (White)	SY8810/RGB
New black accessories listed below	
(m) Wireless Wall Plate Black	SY8810RGBW BL

WIRELESS

SMART REMOTE CONTROL



PART CODE & DESCRIPTION

Wireless Smart Remote	SY9940
Smart Distribution Block	SY9941

This wireless remote control allows users to switch or dim 12/24Vdc LED lighting by simply touching the button on the circular remote.

A magnetic pad is also supplied to easily mount the remote control onto a wall or cabinet if required.

The 10 port distribution block features a plug and play system for ease of installation.

Remote includes 3V battery.

TECHNICAL INFO

Finish	White
Power Supply	12/24Vdc
Cable Length	100mm
Guarantee	12 Months
Sensor Distance	20m max
Wattage	100W max
Dimensions	Remote 50(dia) x 10(d) Junction box 95(w) x 37(d) x 10(h)

MAGNETIC DOOR SENSOR



PART CODE & DESCRIPTION

Single Door Sensor Kit	SY2449/1
Double Door Sensor Kit	SY2449/2
Triple Door Sensor Kit	SY2449/3
Quad Door Sensor Kit	SY2449/4
Kits include 1 x controller (b) and specified number of magnetic door sensor switches (a)	
12 Way Distribution Block (c)	SY7637

This wireless magnetic door sensor switch can turn lights on and off automatically. The switch is secured to the inside of a cabinet using the adhesive back, whilst the separate magnetic contact button is placed on the inside of the door. When the door closes the connected lights automatically switch off. Opening the door prompts the lights to turn back on.

Up to 4 switches can be run from one controller, making it perfect for switching lights on and off within bathroom cabinets. The switch runs on two 3V button batteries which are very easy to change when required. Unit includes connection for one light, a 12 Way Distribution Block can be purchased separately if required.

TECHNICAL INFO

Finish	Silver
Power Supply	12/24Vdc
Cable Length	200mm
Guarantee	12 Months
Max Current	8mA
Sensor Distance	5m
Wattage	12Vdc - 36W 24Vdc - 72W
IP Rating	IP20



ACCESSORIES

MICRO PIR SENSOR



PART CODE & DESCRIPTION

Mini Passive Infra Red Sensor	SY8815
12 Way Distribution Block (a)	SY7637



This sensor switch offers a discreet surface mounted or recessed solution for automatic switching of 12/24Vdc LED lighting. Connection via the Sycamore plug and play connector system allows connected lights to be turned on when it senses movement within a 3 metre distance at a 120 degree beam angle. The built-in timer can be adjusted from 30 to 150 seconds.

Unit includes connection for one light, a 12 Way Distribution Block can be purchased separately if required.

TECHNICAL INFO

Finish	White
Power Supply	12/24Vdc
Cable Length	Sensor Cable - 2m, Input Cable - 1m Output Cable - 1m
Max Current	10A
Sensor Distance	1 - 3m
Sensor Range	120°
Adjustable Timer	30 - 150 seconds
Wattage	12Vdc 100W 24Vdc 200W
IP Rating	IP20
Mounting	Recessed or Surface (Vertical or Horizontal)
Guarantee	12 Months

MICRO DOOR/SWIPE SENSOR



PART CODE & DESCRIPTION

Mini Door/Swipe Sensor	SY8814
12 Way Distribution Block (a)	SY7637



This sensor switch offers a discreet surface mounted or recessed solution for automatic switching of 12/24Vdc LED lighting.

This dual purpose sensor can be used as a door sensor, or a swipe sensor by choosing your desired mode using the simple switch on the side of the sensor.

When in swipe mode, the sensor will turn connected lights on and off when a hand is swiped in front of the sensor. When in door sensor mode, the sensor will turn connected lights on or off when a door is opened and closed.

Unit includes connection for one light, a 12 Way Distribution Block can be purchased separately if required.

TECHNICAL INFO

Finish	White
Power Supply	12/24Vdc
Cable Length	Sensor Cable - 2m, Input Cable - 1m Output Cable - 1m
Max Current	10A
Sensor Distance	1 - 3m
Sensor Range	up to 70mm
Wattage	12Vdc 100W 24Vdc 200W
IP Rating	IP20
Mounting	Recessed or Surface (Vertical or Horizontal)
Guarantee	12 Months

GLOSSARY OF ICONS AND TECHNICAL DATA

	Indicates the compliance with the low voltage and electromagnetic compatibility
	Indicates the compliance with the applicable requirements from products sold within the UK.
	Class I lighting: includes earth protection as a complementary security measure against electrical shocks
	Class II lighting: includes a reinforced or double insulation as a protection against electrical shocks
	Class III lighting: the protection against electrical shocks comes from the supply of very low voltage tension
	Suitable for installation on normally combustible surfaces
	Suitable for use in furniture
	For indoor use only
	WEEE Compliant
ROHS	ROHS compliant

Guarantee

Please refer to our website for information on our guarantee terms and conditions.

Colour Appearance and Colour Temperature

The most common terminology is to classify colour temperature as one of three options. These being warm white (approx 3000k), natural white (approx 4000k) and cool white (approx 6000k).

Colour Rendering Index (CRI)

This is a figure that indicates the accuracy of the reflective surface colour of an object when subjected to artificial light. For example an object in daylight on a reasonably sunny day will be subject to a CRI of 100 from the light source, which in this case would be daylight, the sun. Theoretically the colour of an object will be 100% true.

Once the same object is placed into a dark room and a light fitting with a CRI of 85 is illuminating it, then the colour of that object will be 85% of its true colour. Therefore the higher the CRI, the more accurate the colour.

Colour temperature has a bearing on this as a white object would appear "yellow" if illuminated by a warm white light source. Careful consideration has to be taken to ensure that the correct type of light with the correct CRI and colour temperature is selected for any given installation.

A CRI of 80 is the minimum standard.

Total Lumens

This relates to the amount of light (lumens) emitted from a light fitting in relation to the amount of power it uses to create this output. There are now regulations in place that state minimum lumens per watt criteria and any lights that do not conform aren't able to be used in certain applications. Advice should always be taken to ensure that the correct lighting is used on any installation.

Beam Angles

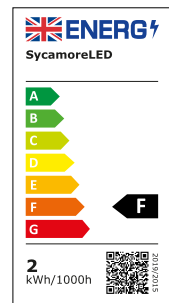
The beam angle of a light fitting allows the installer to determine the spacing of light fittings as to achieve the most uniform, consistent lighting onto the desired area.

ERP Directive

ERP Directive effective from 5th December 2019, commission regulation (EU) No 2019/2020 laid down new eco-design requirements for light sources and separate control gears.

Furthermore, the energy labelling was newly regulated and simplified in scope and was introduced for light sources from 1st September 2021.

A typical ERP label is shown.

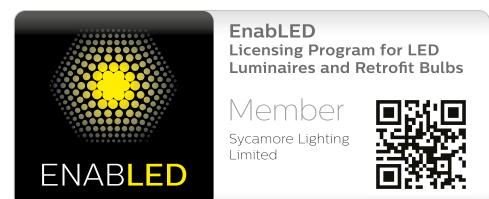


EnabledLED

LEDs and LED controls are the future of lighting, and as LED capabilities continue to evolve and expand, new markets are opening up all the time. Developing new, innovative solutions for tomorrow's new LED applications takes significant investment in research and design, so by joining the EnabledLED licensing program, Sycamore LED has gained access to over 490 Signify inventions and patented technologies, which we can now build into our own products. With access to these cutting-edge technologies, we can gain greater freedom to design optimal solutions for our products.

We can shorten our time to market and also achieve an excellent balance of cost-to-quality including cost-effectiveness in our component sourcing.

Please visit www.signify.com/enabled to confirm which companies are currently licensed in the scheme and what the EnabledLED licensing program covers in more detail.



3 STEP
DESIGN
SERVICE

Looking for further assistance?

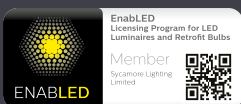
Please call our dedicated technical team for help with lighting plans or any other technical queries
T: 0113 2866686 or email tech@sycamoreLED.com



Order by phone: 0113 2866686

Order by email: sales@sycamoreled.com

Order online: www.sycamoreled.com
*account holders only, apply online.



SycamoreLED.com

Unit 6 Astley Lane Industrial Estate
Swillington
Leeds
West Yorkshire
LS26 8XT

www.sycamoreLED.com



Tel: +44 (0)113 286 6686

sales@sycamoreLED.com

tech@sycamoreLED.com