

SYCAMORE

Installation instructions : 24V Zentra Aluminium Cabinet Light 4W SY2408

Thank you for purchasing this SycamoreLED.com product. Please make sure instructions are followed carefully prior to and during installation and the product is not altered, otherwise warranty may not be valid. For technical support or warranty information please visit www.sycamoreled.com. Or call our dedicated technical helpline +44 (0) 1132 866686.

IMPORTANT—Please read prior to installation

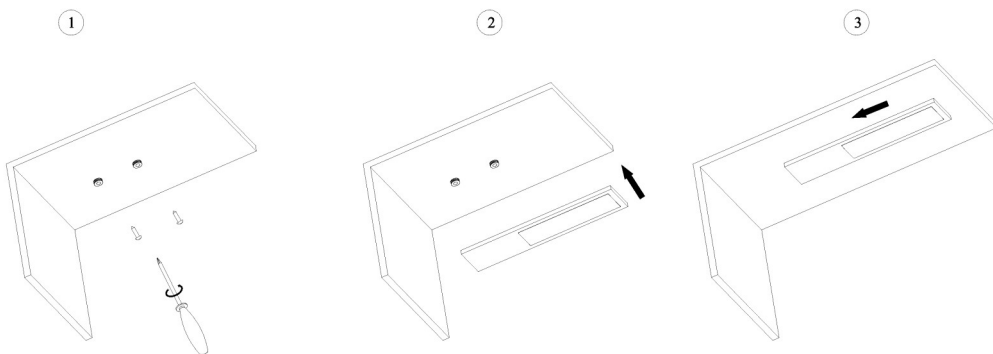
- 1) Please read these instructions carefully before commencing any work
- 2) It is strongly recommended that this unit is installed by a qualified electrician
- 3) To prevent electrocution, switch the power off at the mains supply before installing or maintaining this fitting
- 4) Ensure others cannot restore the electrical supply without your knowledge
- 5) **The PSU must be rated 24VDC and be compatible with the pre wired connector system of this product**
- 6) Never exceed the wattage stated.

INSTALLATION

- 1) Select Location of each Fitting.
- 2) Take care to measure the correct spacing of the mounting screws to allow for the keyhole fixing method used on this product. Fix screws in position. **Do not overtighten.**
- 3) Run cable or light into position, ensuring the cable can be plugged into the distribution block of the 24v driver.
- 4) Position key holes on light over screws, slide and lock the light into position.
- 5) Check operation of light.

24V

Note this is a 24Vdc product.



CARE IN USE

- Please note this fitting has non replaceable parts
- Always switch off or disconnect from the mains when cleaning the product.
- We recommend cleaning with a soft dry cloth. Do not use scourers, abrasives or chemical cleaners

SycamoreLED.com
LS25 2DY

Technical Helpline (EN): 0113 2866686

* Please email sales@sycamoreled.com to register your product



Sycamore
LED

SY2408



This luminaire
contains built-in
LED lamps.

A⁺⁺

A⁺

A

B

C

D

E

} LED

The lamps cannot be changed
in the luminaire.

874/2012

