

# SYCAMORE

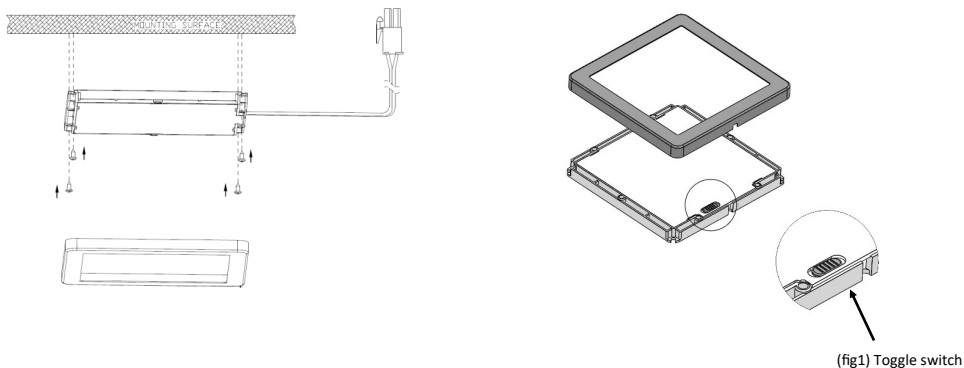
## Installation instructions : SY2430 TriGlow Tetra Cabinet Light

Thank you for purchasing this SycamoreLED.com product. When installed correctly this product will provide years of use. For technical support or warranty information please visit [www.sycamoreLED.com](http://www.sycamoreLED.com), or call our dedicated technical helpline +44 (0) 113 2866686.

### IMPORTANT—Please read prior to installation

- 1) Please read these instructions carefully before commencing any work
- 2) Please retain these instructions for future reference
- 3) It is strongly recommended that this unit is installed by a qualified electrician in accordance with the IEE wiring regulations and building regulations
- 4) To prevent electrocution switch the power off at the mains supply before installing or maintaining this fitting
- 5) Ensure others cannot restore the electrical supply without your knowledge
- 6) The PSU must be rated 24VDC and be compatible with the pre-wired connector system of this product
- 7) Never exceed the wattage stated

### DIAGRAMS



### INSTALLATION INSTRUCTIONS

1. Remove cover and fix square body in position using the screws provided.
2. Select desired colour temperature from the toggle switch under the front cover (fig1) - Cool white, Natural white or Warm White
3. Fix frame over the body of unit. Ensure the cable is located via the cut out on frame.
4. Connect light into PSU using fast fit connector
5. Check operation of light fitting.

### CARE IN USE

- 1) Please note this fitting has non replaceable parts
- 2) Light fitting is not dimmable.
- 3) Always switch off or disconnect from the mains when cleaning the product.
- 4) We recommend cleaning with a soft dry cloth. Do not use scourers, abrasives or chemical cleaners.
- 5) Do not allow moisture to come into contact with electrical parts
- 6) This luminaire should not be disposed of with normal household rubbish. When a replacement is purchased, this luminaire should be returned to the retailer to safely dispose of (WEEE Directive effective July 2006—Waste from Electrical & Electronic Equipment)